



Saba Dejlal Tech.Co

SABA DEJLAH TECH.CO



Saba Dejlal

As early as 2002, Saba Dejlal established itself in the UAE.

Saba Dejlal works as Service provider and consultant in instrumentation market across the Middle East and Africa region (MENA) over 20 years of combined background in Instrumentation engineering, management, sales and support. Our product range includes wide range of Pressure gauges, Switches, Values, Transmitters etc. aimed at various industries such as Petrochemical, Water Supply and Industrial waste water treatment, Petroleum Refining, Food and Pharmaceutical sectors.

We offer the high-quality products from the best brands such as Wika, Krohne, ABB, Fisher, Siemens, Samsung and much more. We have developed strong relationships throughout the years with most reliable manufacturers across the world.

We provide our clients expeditious and speedy results on time. Team Saba Dejlal passionate to come up with best solutions with rock-bottom prices. We take pride in keeping our customers happy and providing them with products at an incredibly competitive price. In case of any questions or need any assistance, please contact us. We look forward to supporting you with the most seamless service.

Bourdon Tube Pressure Gauges

With liquid-filled case for applications with high dynamic pressure loads or vibrations
For gaseous and liquid aggressive media that are not highly viscous or crystallising, also in aggressive ambience

Process industry: Chemical/petro-chemical, power stations, mining, on- and offshore, environmental technology, machine building and general plant construction

Case : S.S

Wetted Parts : Brass



Wetted Parts : Brass

Dial : 63,100 mm

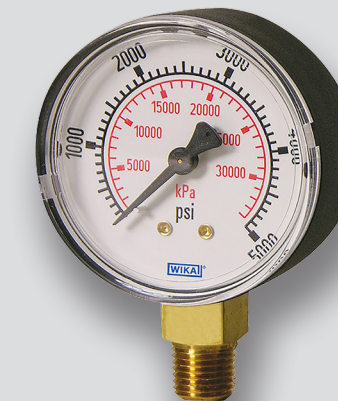
Range : 0~0/6 , 0~1000 bar

Conn : 1/2 & 1/4 G & NPT, Lower & back mount

Oilfilled

Case : Black Metal

Wetted Parts : Brass



Wetted Parts : Brass

Dial : 63,100 mm

Range : 0~0/6 , 0~1000 bar

Conn : 1/2 & 1/4 G & NPT , Lower & back mount

Oilfilled

Case : S.S

Wetted Parts : S.S



Wetted Parts : S.S316L

Dial : 63 , 100 , 160 mm

Range : 0~0/6 , 0~1000 bar

Conn : 1/2 & 1/4 G & NPT , Lower & back mount

Oilfilled

Diaph. Press. Gauge

Wetted Parts : S.S



Wetted Parts : S.S316L

Dial : 100, 160 mm

Range : 0...16 mbar to 0...40 bar

I/P : IP54 , IP65 with oil

ACC. : 1.6

Test Gauge

Wetted Parts :S.S,Brass



Wetted Parts : S.S,Brass

Dial : 160 mm

Range : 0...0.6 to 0...600 bar

I/P : IP54

ACC. : 0.6

Abs . Press. Gauge

Wetted Parts : S.S



Wetted Parts : S.S316L

Dial : 100, 160 mm

Range : 0... 25 mbar to 0...25 bar abs

I/P : IP54 IP65 with oil

ACC. : 1.0....2.5

Pressure Switch

Control systems are gaining more and more importance in industrial applications. consequently, mere pressure indicationon the measuring instrument itself is no longer sufficient, rather the measured value must be transferred to the control system via an electrical signal, e.g. by closing or opening of a circuit. All instruments with inductive contacts are certifiend in accordance with ATEX Ex ia.

KP.S

Wetted Parts : Brass



Pressure Switch Danfoss
Conn : 1/4 G
Low pressure
With reset
range: 32...8 Bar/100.465psi

PGS

Wetted Parts :S.S, Brass



Diale : 100 mm
Conn : 1/2 NPT Lower mount
Wetted mat : S.S316, Brass
Range : 0...1_0...600 Bar
Contact: 831.1

P.S UE

Wetted Parts : S.S



Mat.: Mat:s.s316
Conn : 1\4G female
Range : 0...1_0...600 Bar

P.S

Wetted Parts : S.S



Mat.: S.S
Conn : 1/8
Range : 30...300_500...5000 PA

P.S

Wetted Parts : S.S



Mat.: S.S
Conn : 1/2 NPT , G
Range : 0...1_0...600 Bar
4 Digit display
5 pin

P.S

Wetted Parts : S.S



Mat.: S.S
Conn : 1/4 NPT , G
Range : 0...1_0...600 Bar
S.P :1A/4A, AC250V

Pressure & Diff.Press.Transmitter

A pressure sensor (pressure transmitter) converts the physical quantity ‘pressure’ into an indus-try-standard signal. Our portfolio covers a wide spectrum of pressure sensors: for refrigeration and air-conditioning applications, the food industry, mobile working machines, medical gases and the semiconductor industry.

Thread

For Industrial Applications



Non-linearity : < 0.25 or 0.5 BFSL
Range : 0...0.05 to 0...1000 bar
0...0.1 to 0...25 bar abs.
-0.025...+0.025 to -1...+24 bar
Special feature: Compact design
Free test report
2 million possible variants

Diaphragm

Flush Diaphragm



Non-linearity : < 0.2 BFSL
Range : 0...0.1 to 0...600 bar
0...0.025 to 0...16 bar abs.
-1...0 to -1...+24 bar
Special feature:flush process conection
Medium temp up to 150 c°
Comprehensive stocks

Hart

Case : Aluminum , S.S



Non-linearity : < 0.075...0.1
Output signal : 4...20 mA HART
Range: 0...0.1 to 0...4,000 bar
0...0.1 to 0...60 bar abs.
-1...0 to -1...+60 bar
Special feature:flush process conection
whith integrated display & instrument

Diff. Press. Transmitter

Case : Aluminum , S.S



Non-linearity : < 0.075...0.15
Output signal : 4...20 mA HART
Range: 0...10mbar or 0...40 bar
Special feature: Static load 160bar,
optionally 420bar

Diff. Press. Transmitter

Case : Plastic



Range : -10000 , 10000 Pa
Differentv Ranges
LCD : 4 ~ 20 mA , 0 ~ 10 Pa

Universal. Process .Trans

Case : Steel



Non-linearity : < 0.1
Output signal : 4...20 mA HART
Measuring Range: 0...0.4 or 0...600 bar
0...1.6 to 0...40 bar abc.
-0.2 ...+0.2 to -1...+40 bar

Thermometers

A wide range of applications in machine building, vessel, piping and apparatus construction
Heating technology bimetal, expansion or gaz
Diffrent class accuracies, response time and resilience to environmental influences.Diverse connec-
tion designs, stem diameters and individual stem lengths enable a flexible measuring point design.

Bimetal, Every Angle Wetted Parts : S.S	Bimetal, Lower Wetted Parts : S.S	Bimetal, Back Wetted Parts: Brass,S.S
		
Dial: 100 , 160 mm Stem Dial : 6 , 10 mm Stem Length : 63...999 mm Conn : 1/2 NPT , G Wetted mat : SS316L Range : -60 ... 0 , 0...600 c°	Dial : 63 , 100 , 160 mm Stem Dial : 6 , 10 mm Stem Length : 63...999 mm Conn : 1/2 NPT , G Wetted mat : SS316L Range : -60 ... 0 , 0 ... 600 c°	Dial: 63 , 100 , 160 mm Stem Dial : 6 , 10 mm Stem Length : 63...999 mm Conn : 1/2 NPT , G Wetted mat : SS316L Range : -60... 0 , 0 ...600 c°
Gas Actuation Wetted Parts : S.S	Glass Wetted Parts : Copper	RFID Display
		
Dial : 100 , 160 mm Stem Length : 100mm ... 999 mm Conn : 1/2 NPT , G Range : -200...+100 TO 0...+700 c°	Nominal size : 110 ,150 ,200 mm Stem Diale : 6 & 10 Scale range : -30...+200 c°	Range : -50 ~ 330 , 0 ~500 c°

Temperature Transmitters

Temperature transmitters are a fundamental component in the industry. These temperature trans-
mitter devices convert the input signal from a wide range of temperature sensors, such as resistance
thermometers, thermocouples, and potentiometers, into a standardized analogue or digital output
signal.

Head mount Degital	Head mount Analogue	Rail mount Analogue
		
2 , 3 , 4 wire Out Put : 4...20 mA Analog , Hart , EX Head mount	2 , 3 , 4 wire Out Put : 4...20 mA Analog Head mount	2 , 3 , 4 wire Out Put : 4...20 mA Analog , Hart , EX Rail monat
Aluminum Head Hart	RTD Measuring Insert,MIcable	RTD Threaded, Miniature
		
Input : RTD, Thermocouple Accuracy : <0.1 % Output : 4...20 mA, Hart protocol Special feature : PC configurable	Sensor element: 1 x Pt100 , 2 x Pt100 Measuring Range: -196...+600 c° Conn: 2- ,3- and 4-wire Measuring insert: MI cable	Sensor element: 1 x Pt100 , 2 x Pt100 Measuring Range: -196...+500 c° Conn: 2- ,3- and 4-wire Process conn: Mounting thread

Temperature Switches

A pressure switch opens or closes a corresponding switch contact as soon as a preset pressure is reached. Depending on the requirement, pressure switches are used with mechanical or electrical switch contacts, with or without displays and with various setting possibilities.

Pressure switches are used in a variety of industrial

<div><div>TGS</div><div>Wetted Parts : S.S</div><div></div><div>Dial : 100 , 160 mm Lower, back mount Stem Dial : 6 & 8 mm Stem Length : 63mm , 999mm Conn : N.C. / N.O. Wetted mat : SS316 Range : 0 ~ 60 , 0 ~ 600 c°</div></div>	<div><div>Cas Actuated</div><div>Wetted Parts : S.S</div><div></div><div>Dial : 100 , 160 mm Lower, back mount Stem Dial : 6 & 8 mm Stem Length : 63mm , 999mm Conn : N.C. / N.O. Range : 0 ~ 60 , 0 ~ 600 c° Capillary : 0 ~ 1000 , 0 ~ 15000 mm</div></div>	<div><div>Temp Switch</div><div>Electronic</div><div></div><div>Measuring Range: -20...+80 c° , -20...+120c° Material : S.S316 Output : switching outputs PNP or PNP 4...20 mA 0...10 V IO-Link 1.1</div></div>
<div><div>Bimetal</div><div>Wetted parts : S.S</div><div></div><div>Range : 50...200 c°, fixed Features : voltage to AC48 V, DC 24 V Compact version: NC , MA normally open(NO) Electr. conection via plug connection</div></div>	<div><div>Compact</div><div>Wetted Parts : S.S</div><div></div><div>Setting Range : -30...+10 to 160...+250 c° Ignition protection typ: Ex ia or Ex d Switch: 1 x SPDT or 1 x DPDT switching power: AC 250V, DC24 V/2A</div></div>	<div><div>Cap. Temp. Switch</div><div>Wetted Parts : Copper</div><div></div><div>Nominal size : 60 ,80 ,100 mm Scale Range : -100... +400 c° Option : sheet steel version Wetted parts : Copper alloy</div></div>

Diaphragm Seals, Accessories

Diaphragm seals can be connected to almost all pressure gauges, process transmitters, pressure switches or pressure sensors. Mounting may be made via a direct connection, a cooling element or a corresponding capillary.

The combined systems can therefore withstand a pressure of 10 mbar up to 3,600 bar at extreme temperatures (-130...+400 c°) and whit awide variety of media, thus enabling pressure meas.

<div><div>Diaphragm Seal</div><div>Mat : Hastelloye,Inconel,Ptfe</div><div></div><div>Instrument Conn. : 1/2 , 1/4 Process Conn. :.1 ,1 1/2 ,2 P/N: 100 Bar</div></div>	<div><div>Diaphragm Seal</div><div>Mat : Hastelloye,Inconel,Ptfe</div><div></div><div>Instrument Conn. : 1/2 , 1/4 Process Conn. :.1 ,1 1/2 ,2 P/N: 100 Bar</div></div>	<div><div>Diaphragm Seal</div><div>Mat : Hastelloye,Inconel,Ptfe</div><div></div><div>Instrument Conn. : 1/2 , 1/4 Process Conn. :.1 ,1 1/2 ,2 P/N: 100 Bar</div></div>
<div><div>Diaphragm Seal</div><div>Mat : Hastelloye,Inconel,Ptfe</div><div></div><div>Instrument Conn : 1/2 , 1/4 Process Conn. : 1/2 , 1/4 P/N: 100 Bar</div></div>	<div><div>DiaphragmSeal</div><div>Mat : Hastelloye,Inconel,Ptfe</div><div></div><div>Instrument Conn : 1/2 , 1/4 Process Conn. : 1/2 , 1/4 P/N: 25 Bar</div></div>	<div><div>Diaphragm Seal</div><div>Mat : Hastelloye,Inconel,Ptfe</div><div></div><div>Instrument Conn : 1/2 , 1/4 Process Conn. :.1 ,1 1/2 ,2 P/N: 25 Bar</div></div>

Valves And Protective Devices

Via cocks, shut-off valves, valve manifolds or monoflanges, pressure measuring instruments can be securely separated from the process during commissioning, maintenance or calibration.

Protective devices, such as syphons, overpressure protectors and snubbers, increase the service life and extend the application spectrum of pressure measuring instruments.

Cooling

Mat : S.S, Hastelloy , Inconel, Ptfе Coated



Instrument Conn : 1/2 , 1/4
Instrument Conn : 1/2 , 1/4
3 & 5 Blade

Syphon

Mat : S.S, Hastelloy , Inconel



Conn : 1/2 F*M
Type : U,90,180

Thermowell

Mat : S.S, Hastelloy , Inconel, Ptfе Coated



T : 30 mm ~ 100 mm
U : 30 mm ~ 2000 mm
Size : 1 , 1 1/2 , 2
Class : 150 , 300 , 600 , 900

2Way 2Valve Manifold

Mat : S.S,Hastelloy , Inconel, Ptfе Coated



2Way 2Valve Manifold
Mat:S.S316
Connection:1/2 NPTF* 1/2 NPTM
6000PSI

5Way 5Valve Manifold

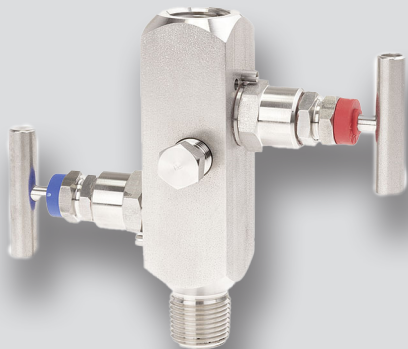
Mat : S.S, Hastelloy , inconel, Ptfе Coated



5Way 5Valve Manifold
Mat:S.S316
Connection:1/2 NPTF
6000PSI

Block-And-Bleed Valve

Mat : S.S, Hastelloy , Inconel, Ptfе coated



Version : Block-And-Bleed Valve
Mat:S.S316
Connection:1/2 NPTF* 1/2 NPTM
6000PSI

Rotarymeter & Flowmeter

injection molded, for clean water

Easy to read scale. Silkscreened with black ink for optimum contrast

Direct exposure to sunlight is not recommended

Liquid Rotarymeter

Mat. : PVC



DN : 15...150mm
Range : 10-100 L/H...30-180M3/H
Max working pressure : 0.6Mpa
Max temp.: 60 c°
Accuracy: +/-5 %

Liquid Rotarymeter

Mat. : S.S



DN : 15...100mm
Range : 10000-100000...2.5-25 L/H
Max working pressure : 1.6Mpa
Max temp.: <100 c°
Accuracy: +/-5 %

Gas Rotarymeter

Mat. : Acrylic



Size : 1/8..1/4
Range : 0.1..1-10..100 L/m
Max working pressure : 0.6Mpa
Max temp.: 60 c°
Accuracy: +/-5 %

Mass Flowmeter

Mat.: S.S316



Size: 1/2...6 inch
Output: 4..20 mA
Lcd Display , Hart , Ex
Aluminum Head
Class: 150, 300 , 600

Magnetic Flowmeter

Mat.: S.S,Wcb,PTFE, EPDM



Size: 1/2...6 inch
Output: 4..20 mA
Lcd Display , Hart , Ex
Aluminum Head
Class: 150, 300 , 600

Turbine Flowmeter

Mat.: S.S316



Size: 1/2...6 inch
Output: 4..20 mA
Lcd Display , Hart , Ex
Aluminum Head
Class: 150, 300 , 600

Differential Pressure Gauge

Differential pressure gauges measure the difference between two pressures. Common applications for differential pressure indicators include: monitoring filter contamination; providing level measurement in closed vessels; indicating overpressure measurement in clean rooms; monitoring flow measurement of gaseous and liquid media; and providing control of pumping plants.

Diff. Press. Gauge
Side Connection



Dial : 80 mm
Wetted mat : S.S316
Range : 0 ~ 250 , 0 ~ 10000 mBar
Max. Static Press. : 100 Bar
Case: Aluminum

Diff. Press. Gauge
Diyaphragm Type



Dial : 100 ,160 mm
Wetted mat : S.S316
Range : 0 ~ 250 , 0 ~ 10000 mBar
Max. Static Press. : 40 Bar
Conn.: 1/4F , 1/2M
Case: S.S

Diff. Press. Gauge
Back Connection



Dial : 110 mm
Wetted mat : Brass
Range : -250 ~ 0 , 0 ~ 5000 Pa
Max. Static Press. : 1 Bar
Conn.: 1/4F
Case: Aluminum

Digital Press.Gauge
4 Digit Lcd



Dial : 80mm
Range : -1...0 _0...1000 bar
Accuracy : %4FS
IP rating : IP 65
Conn : 1/4 G

Digital Diff. Press.Gauge
4 Digit Lcd



Dial : 80mm
Range : -30~30 Pa...-5~5KPa
Accuracy : %2FS (≤100Pa)
%1FS(>100Pa)
IP rating : IP 54

Digital Temp. Gauge
Wetted mat : SS316L



Dial: 100 mm
Stem Dial : 6 mm
Stem Length : 63mm...150mm
Conn : 1/2 NPT , G , Lower mount
Range : -60 ~ 0 , 0 ~ 600 c°

Industrial Valves

Industrial valves have been around for more than a century. As applications become more specific and complicated, valves have evolved into nine major types to suit different requirements. These 9 types cover all industrial applications and services.

Solenoid Valve
Body: Brass



Size: 1/8 .. 2 1/2
Input: 220AC/24VDC
N.C./N.O.
Thread type
IP65

Solenoid Valve
Body: S.S



Size: 1/8 .. 2 1/2
Input: 220AC/24VDC
N.C./N.O.
Thread type
IP65

Butterfly Valve
Body: S.S, WCB, Brass



Size: 1...48 inch
Disk: S.S/Aluminun brozne
Wafer , Lug , Flange
Gear box , Lever
Seat , EPDM, NBR , PTFE

Control Valve
Body: S.S, WCB, Brass



Size:1...12 inch
Class: 150 ,300 ,600
Actuator
Globe Vlave

Ball Valve
Body: S.S, WCB, Brass



Size:1...12 inch
Class: 150,300,600,900
Ball Mat.: S.S
Packing: PTFE

Gate Valve
Body: S.S, WCB, Brass



Size:1...12 inch
Class: 150,300,600,900
Ball Mat.: S.S
Packing: PTFE

Industrial Valves

An ON/OFF Valve is the fluid equivalent of an electrical switch, a device that either allows unimpeded flow or acts to prevent flow altogether. These valves are often used for routing process fluid to different locations, starting and stopping batch processes, and engaging automated safety (shutdown) functions.

On/Off Valve

Body : S.S, WCB



Size: 1...12 inch

Body: S.S,Aluminun brozne, Wcb

Class: 150 , 300 , 600

Actuator

Solenoid Valve

Solenoid Valve

3/2 , 5/3



Size: 1/2 , 1/4 inch

Body : Aluminun brozne

12 , 24 Volt

1 coil , 2 coil

Actuator

Electrical , Penumatic



Model:Quarter-turn pneu. actuator

Power: 150,300,600,1500 N

Lubrication : Lubricants are applied to all moving parts to extend their service life.

Operating Media: Air, Water, Gas, Oil, Steam

Safety Valve

Body: S.S, WCB, Brass



Size:1...12 inch

Class: 150,300,600,900

With / without Lever

Air Filter Regulator

Body: Aluminum



Size:1/4...2 inch

Regulator

Packing: PTFE

Working Press. : 1...250 Bar

Safety Valve

Body: S.S, WCB, Brass



Size:1...3 inch

Ball Mat.: S.S , Brass , Wcb

Packing: PTFE , S.S

Thread Connction

Level

Constant product quality, plant safety and economic efficiency - these are important aspects for any level measuring point. Levels in liquids, pastes, bulk solids or liquefied gases are often measured in tanks, silos or movable containers. For continuous, interface and density measurement as well as for point level detection a broad range of measuring principles is available.

Ultrasonic Level

Mat.: PVDF



Aluminum Head

Lcd display

4..20 mA, Hart , Ex

Conn.: 2 inch

Level Switch

Mat.: S.S316



Aluminum Head

Stem length: 50..200 mm

EX

Conn.: 1 inch

Sub. Level Transmitter

Mat.: S.S316



Range: 0..0.1 to 0...10 Bar

Cable length: 0...1 to 0...100 M

Out put : 4...20 mA

Ex

Level Transmitter

Mat :S.S Hastelloy,Inconel,Ptfe



Aluminum Junction box

Stem dial: 6 , 8 , 10 , 12 mm

Stem Length: 100..2000 mm

Output : 4...20 mA

Connection: Thread , Flange

Level Switch

Mat : NBR



type : Floater

Range :0.5.. 2Bar

Cable Lenght: 5...20 M

Flow Switch & Trans.

Mat :S.S



Aluminum Junction box

1 SPDT

Output : 4...20 mA

Connection: Thread , Flange

Positioner

Positioners ensure a predetermined assignment of the valve position (controlled variable) to the input signal (reference variable). They compare the control signal issued by pneumatic or electric automation equipment (controller, control station, process control system) to the position or opening angle of the control valve and supply a corresponding output signal pressure.

I/P Positioner

Cace : S.S



I/P positioner Samson

Made in Germany

input:20-4mA

output: 15-3 psi

Fiting

Mat : S.S,Hastelloy, Inconel



Connection: 1/8...3 inch thread

Female * Female

Male * Female

Male * Male

I/P Positioner

Cace : S.S



I/P positioner Samson

Made in Germany

input:20-4mA

output: 15-3 psi

Fiting

Mat : S.S,Hastelloy, Inconel



Connection: 1/8...3 inch thread

Female * Female

Male * Female

Male * Male

I/P Positioner

Cace : S.S



COMMUNICATION : HART

EXPLOSION PROTECTION : Without

CONTROL LOOP : 4 to 20 mA

Attachment to :Linear actuator, single acting, double acting

Rotary actuator, single acting, double acting

Capillary

Mat : S.S,Hastelloy, Inconel



Instrument Conn : 1/2

Lenght: 1...15 M

Our Suppliers



























































✉ info@sabadejlah.com

☎ +971507439361

☎ (+971) 6 5480935

🌐 www.sabadejlah.com

📍 104 Al Qubaisi Bld.Ammar Bin Yaser St.King Abdul Aziz

SD
Saba Dejlal Tech.Co